

SEAL:

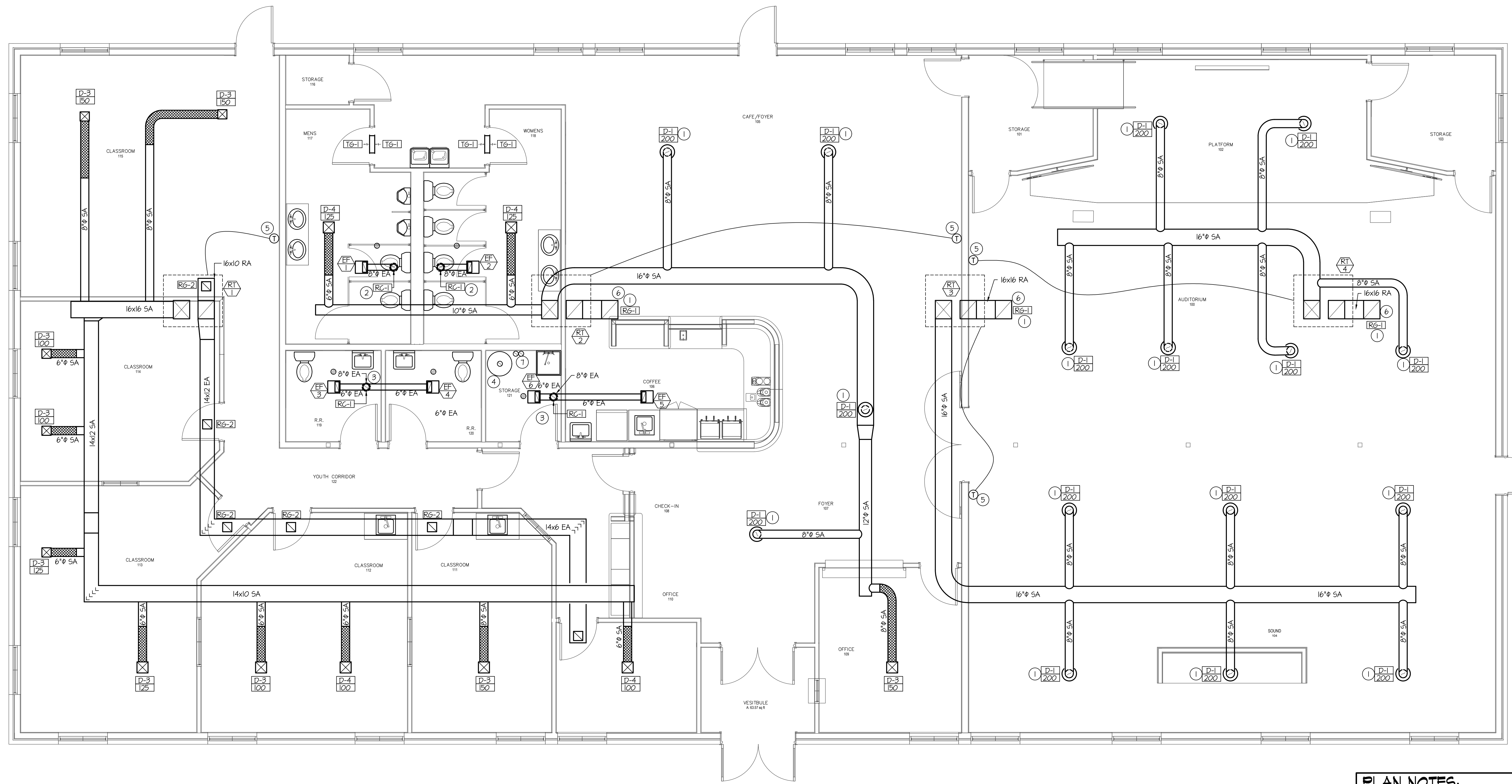
REV. DATE DESCRIPTION
09-11-19 PERMITTING SET

PROJECT: New Tenant Improvement For: **THE RISING CHURCH**
10702 FRONTAGE ROAD
SOUTH JORDAN, UT 84095
MOUNTAIN WEST ARCHITECTS | 543 25TH ST. - DEER, UT 84401 PH: 801-388-6052
www.mountainwestarchitects.com

SHEET TITLE: **MAIN LEVEL MECHANICAL FLOOR PLAN**

SHEET NUMBER: **M102**

DO NOT SCALE DRAWING



MAIN LEVEL MECHANICAL FLOOR PLAN
SCALE: 1/4" = 1'-0"



MECHANICAL LEGEND	
Ⓢ	ELECTRONIC THERMOSTAT
Ⓢ	EQUIPMENT SYMBOL
HD	HAND DAMPER
Ⓢ	ROUND BRANCH DUCT WITH HAND DAMPER
Ⓢ	INSULATED FLEXIBLE DUCT
Ⓢ	RETURN AIR OR EXHAUST GRILLE
Ⓢ	CEILING DIFFUSER

GENERAL NOTES:

A- THE CONTRACTOR SHALL CHECK AND VERIFY ALL DIMENSIONS AND CONNECTIONS ON THE JOB SITE. ALL WORK SHALL BE EXECUTED FROM MEASUREMENTS TAKEN AT THE SITE.

B- THE MECHANICAL CONTRACTOR SHALL BE RESPONSIBLE TO INSURE PROPER CODE CLEARANCES FOR ELECTRICAL AND MECHANICAL ACCESS WHEN INSTALLING ANY EQUIPMENT SUPPLIED BY THE MECHANICAL CONTRACTOR.

C- IT IS CRITICAL THAT THIS CONTRACTOR COORDINATE EQUIPMENT LOCATIONS WITH PIPING, DUCTWORK, ELECTRICAL CONDUIT AND BUILDING STRUCTURE TO INSURE CODE COMPLIANCE.

D- CEILING DIFFUSERS ARE SHOWN IN APPROXIMATE LOCATIONS. REFER TO LIGHTING PLANS AND REFLECTED CEILING PLAN FOR EXACT LOCATIONS.

E- DUCT DIMENSIONS CALLED OUT ON DRAWINGS ARE INSIDE FREE AREA DIMENSIONS. ACOUSTICAL DUCT LINER ARE TO BE ADDED TO OVERALL MEASUREMENTS.

F- ALL DUCTWORK AND PIPING WHICH PASSES THRU FIRE RATED WALLS TO BE FIRE STOPPED WITH APPROVED FOAM OR SEALANT. REFER TO SPECIFICATIONS FOR APPROVED MANUFACTURES.

PLAN NOTES:

- 1 RUN DIFFUSERS 6" BELOW FROM BOTTOM TRUSSES. COORDINATE WITH LIGHTING.
- 2 RUN NEW 8" DUCT THRU ROOF THRU EXISTING PENETRATION TO NEW ROOF GAP. PATCH AS REQUIRED.
- 3 NEW 8" THRU ROOF TO ROOF GAP. SEE DETAILS ON SHEET M201.
- 4 RUN NEW VENT FROM NEW WATER HEATER LOCATION TO NEW FLUE THRU ROOF. INSTALL AS PER DETAIL ON SHEET M201.
- 5 PROVIDE AND INSTALL NEW THERMOSTATS OR OWNER PROVIDED. EXTEND WIRING TO NEW LOCATION AS NEEDED.
- 6 PROVIDE 90° BEND RETURN FROM ROOF TOP UNITS FOR SOUND PURPOSES.
- 7 RUN TWO 4" COMBUSTION FLUE AND TERMINATE 6" AWAY FROM CEILING AND 6" AWAY FROM FLOOR.

Engineered Systems Associates
1355 EAST CENTER
POCATELLO, IDAHO 83201
PHONE: (208) 233-0501
FAX: (208) 233-0529
EMAIL: esa@engsystems.com
ESA JOB NUMBER: 19059